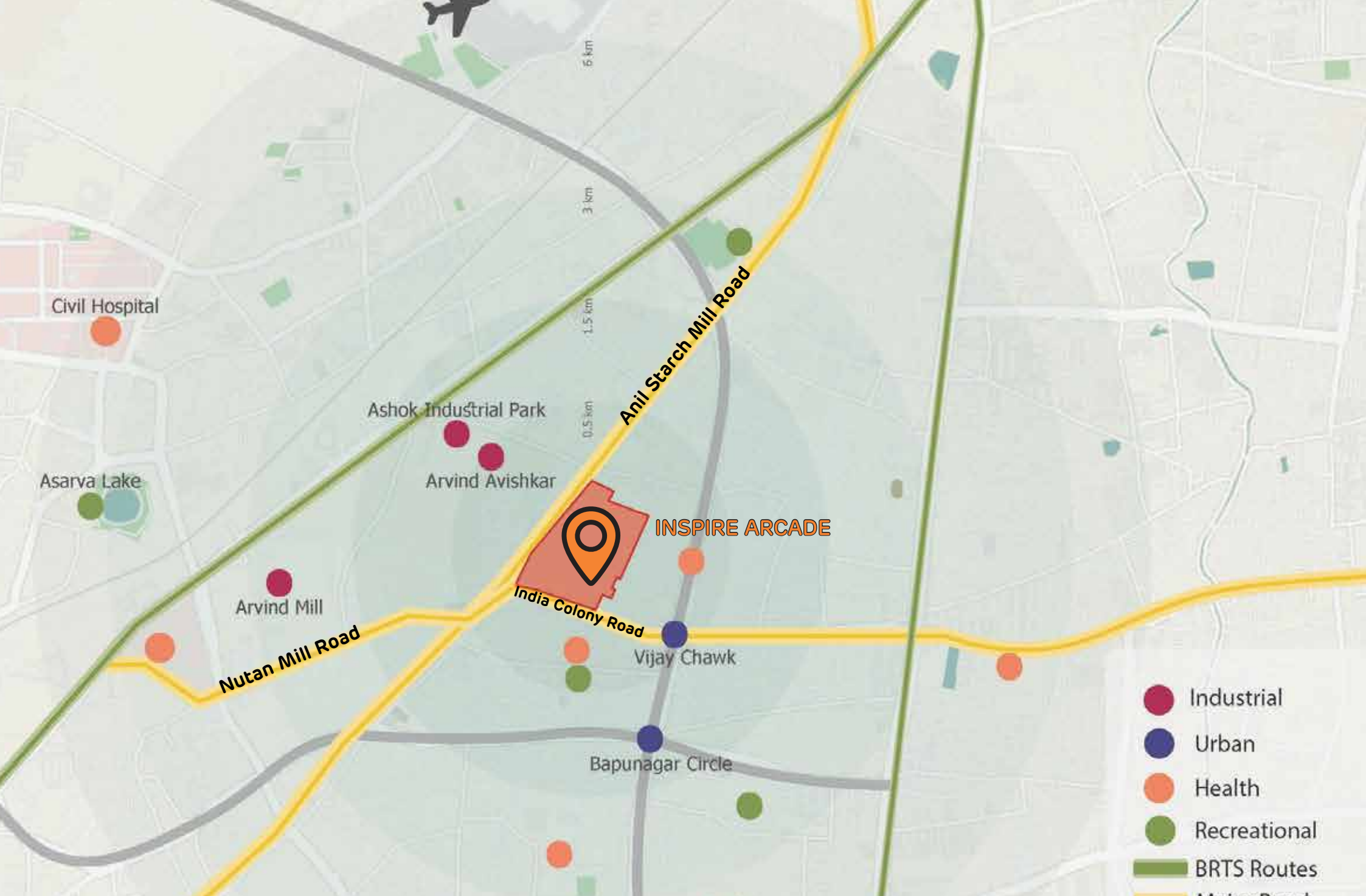


INSPIRE ARCADE

WELCOME TO THE INSPIRE ARCADE

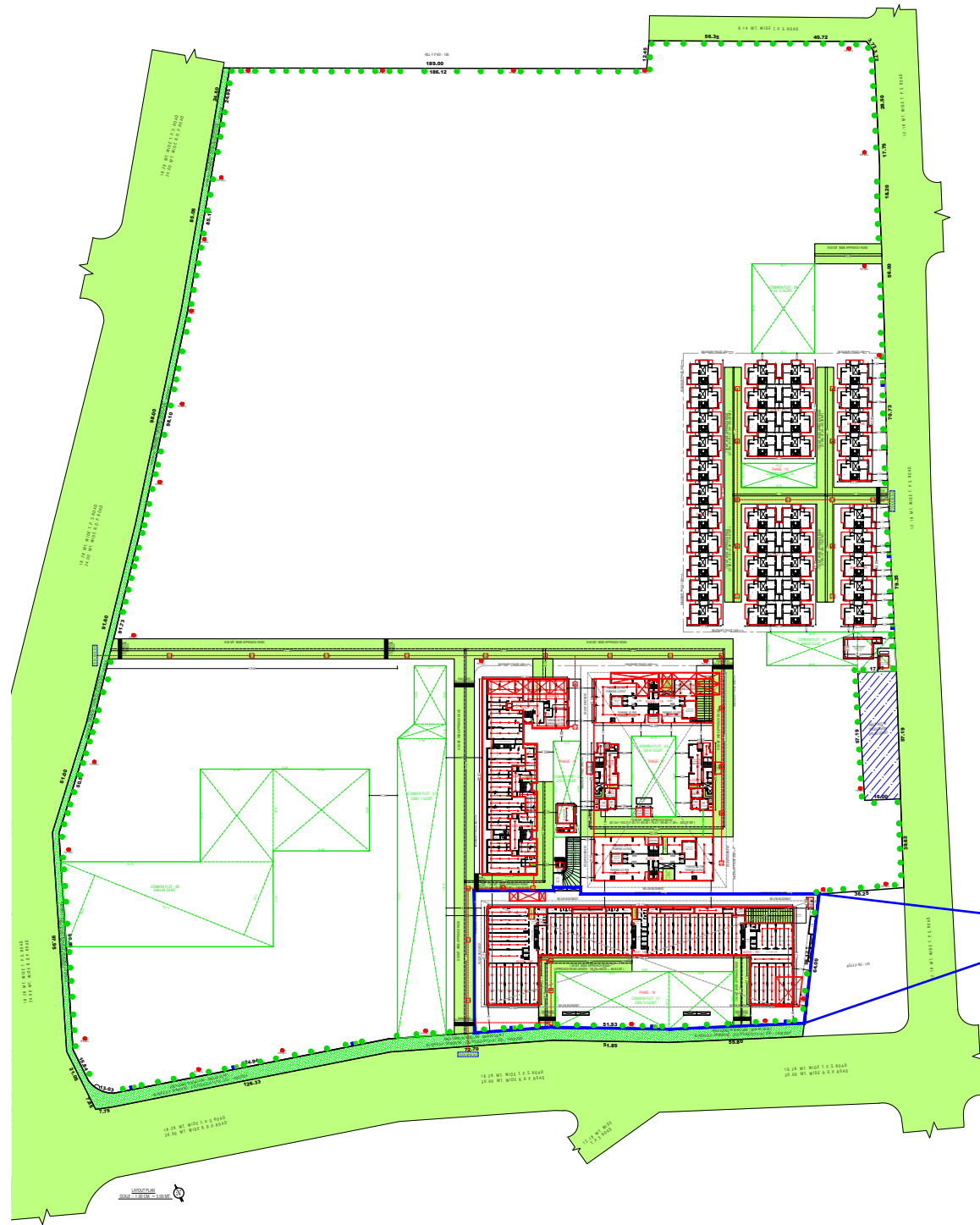


Artistic Image

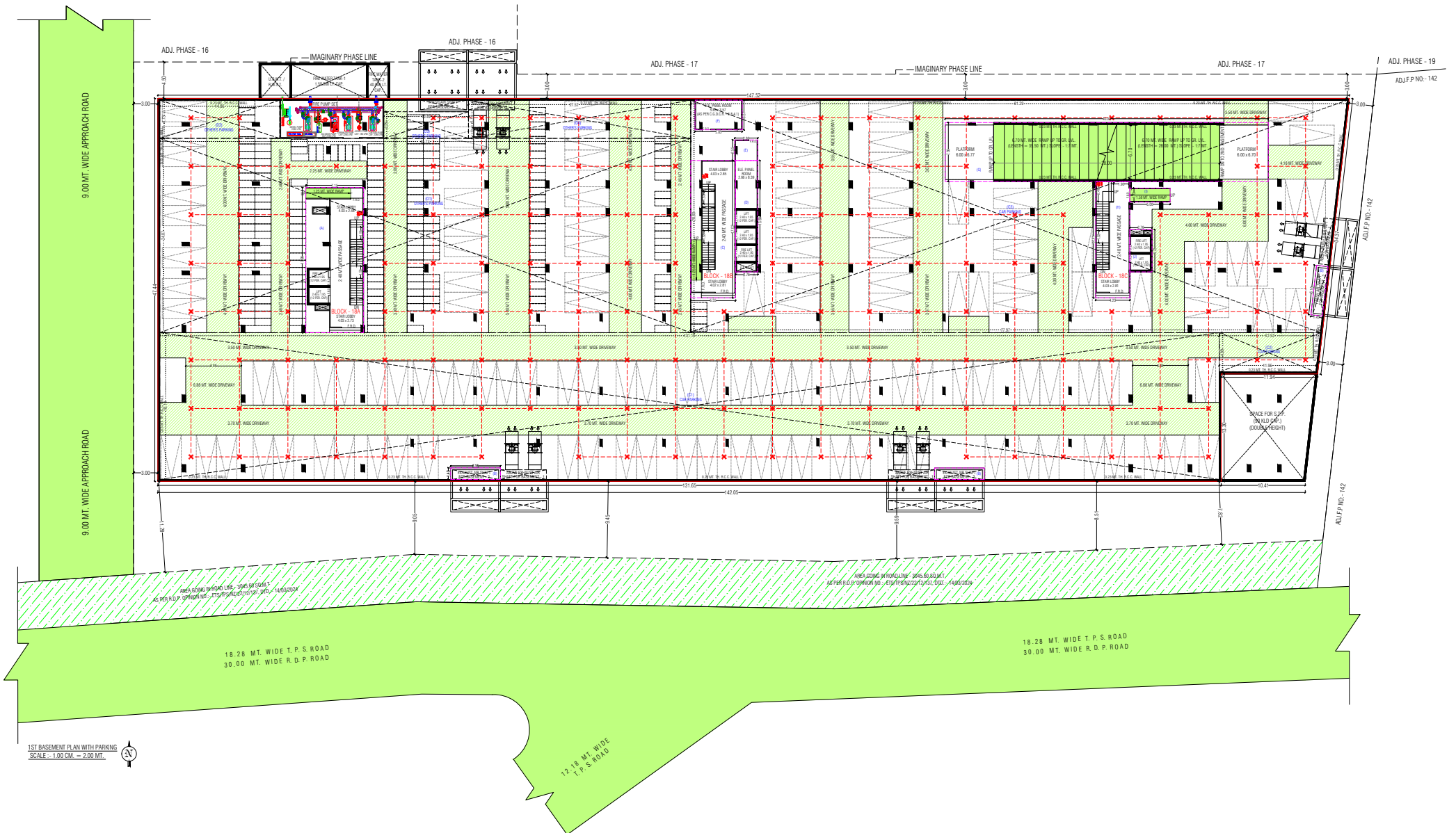




CORNER VIEW



Inspire Arcade

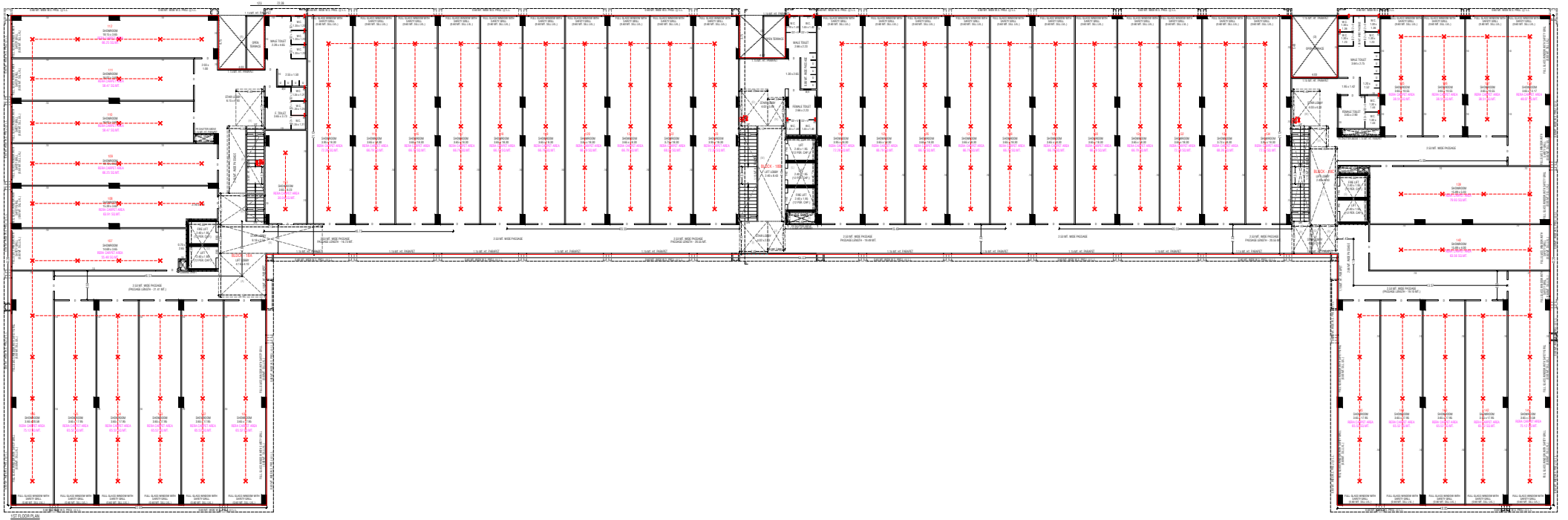


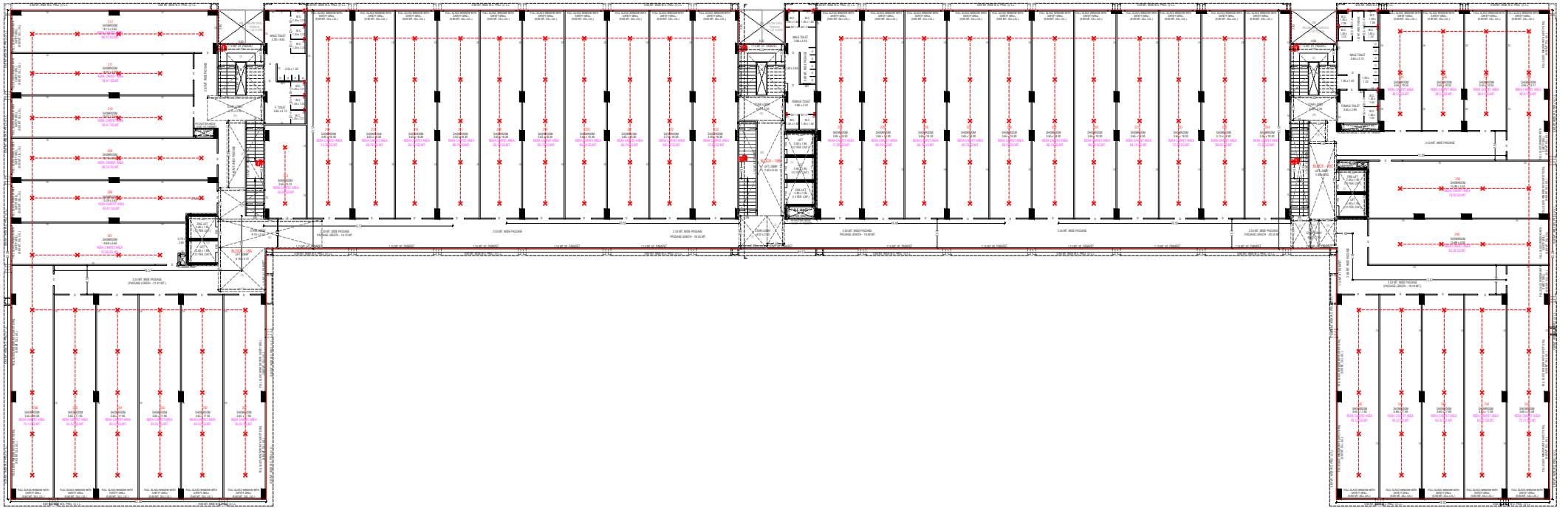
1ST BASEMENT PLAN WITH PARKING
 SCALE = 1:500 CM = 2:00 MT.

1ST BASEMENT



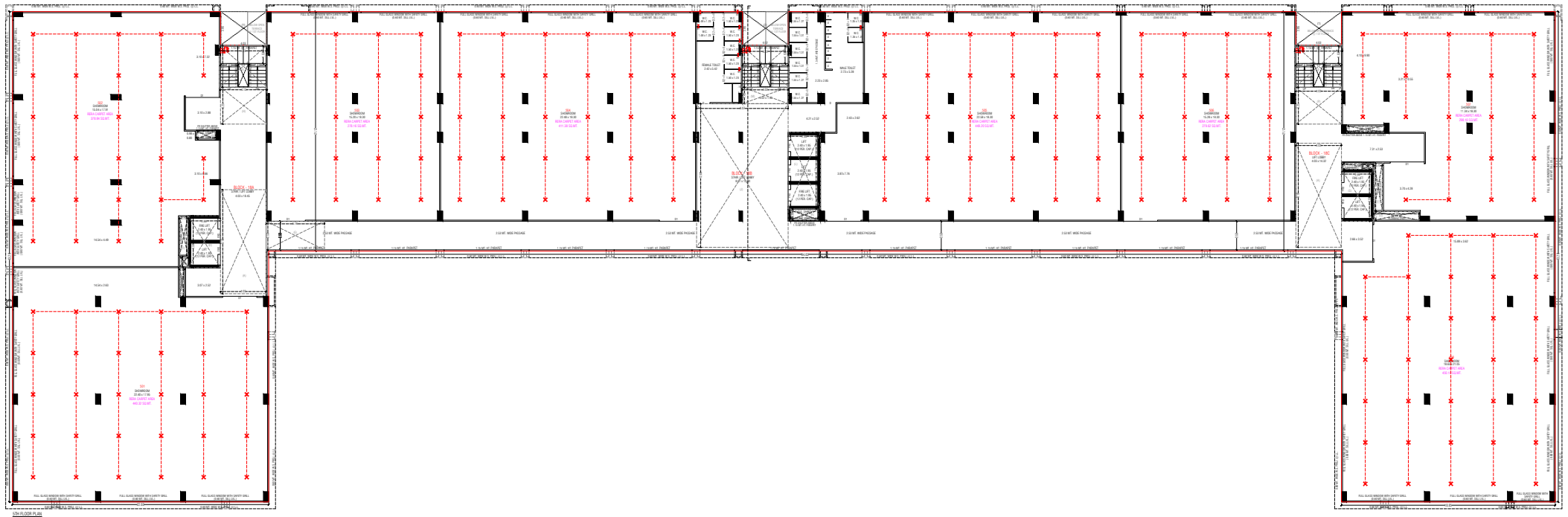
GROUND FLOOR PLAN

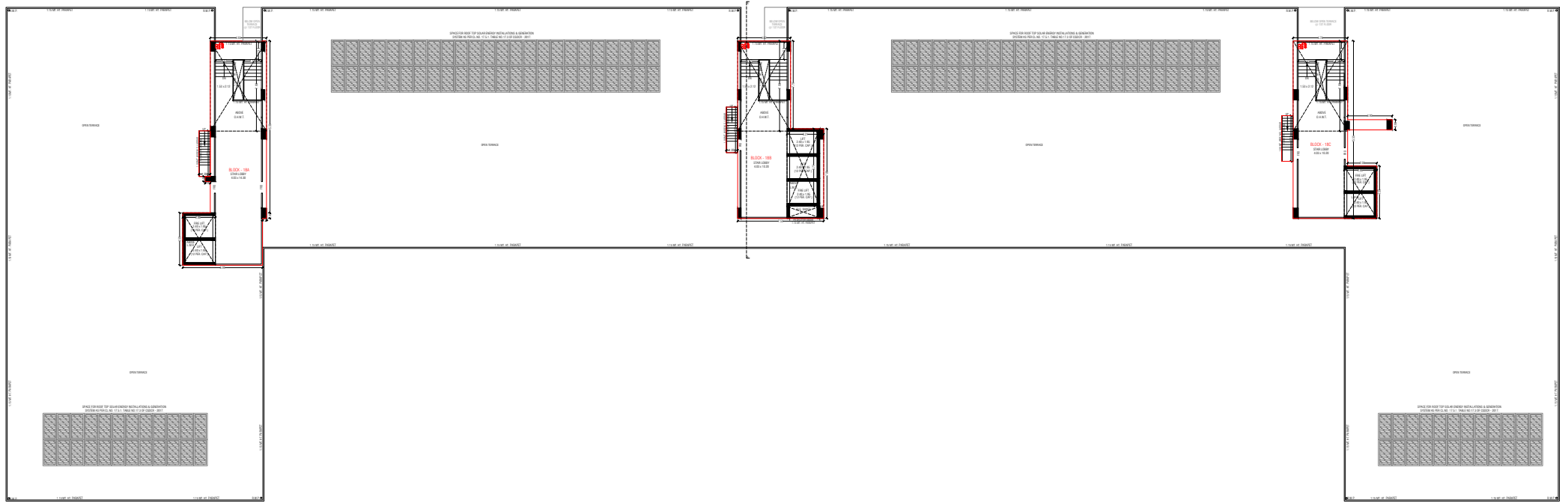




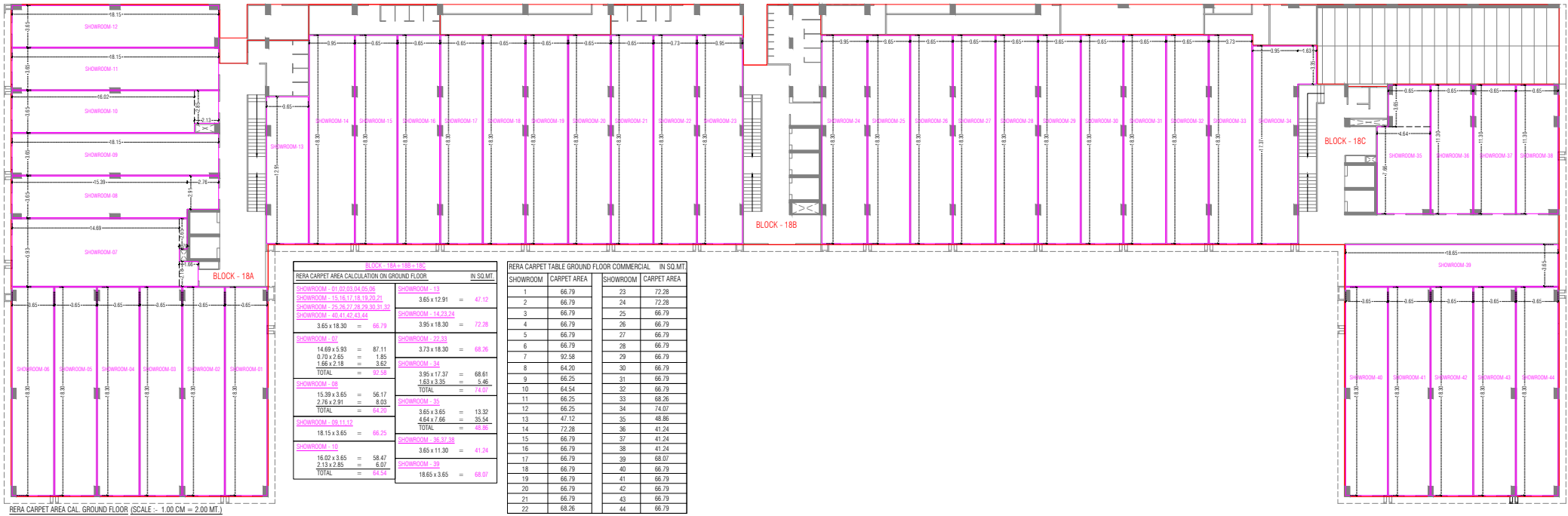




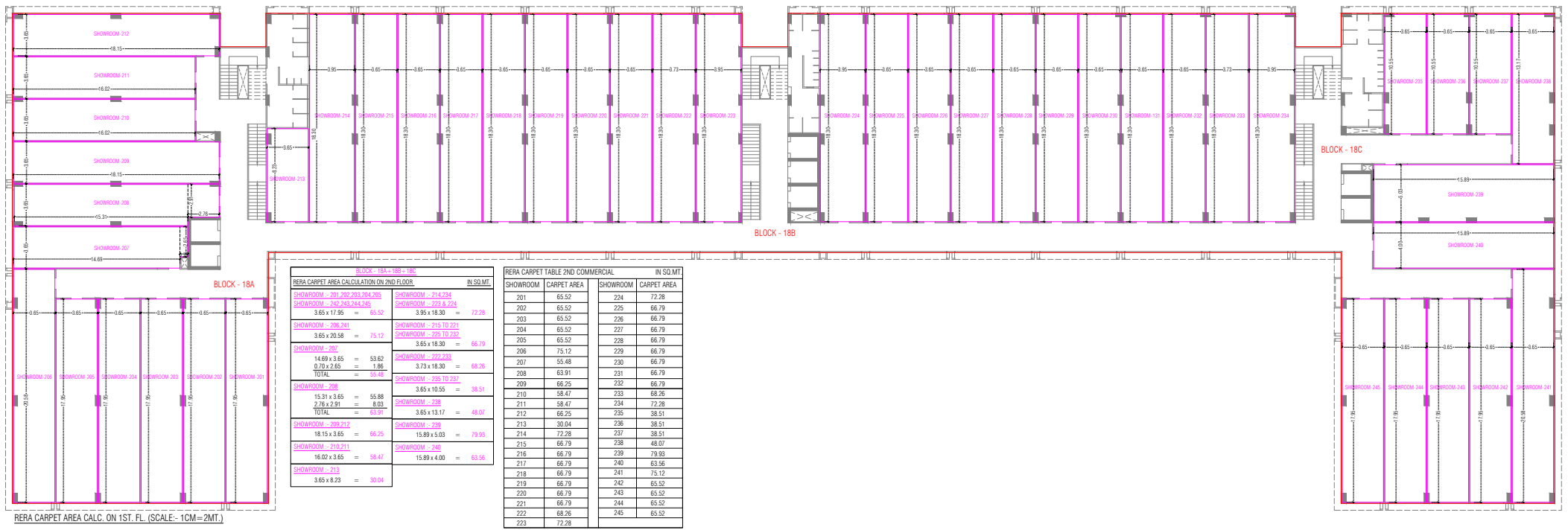




OPEN STORAGE PLAN WITH STAIR CORES, R.T. & L.W.S.



GROUND FLOOR RERA LAYOUT



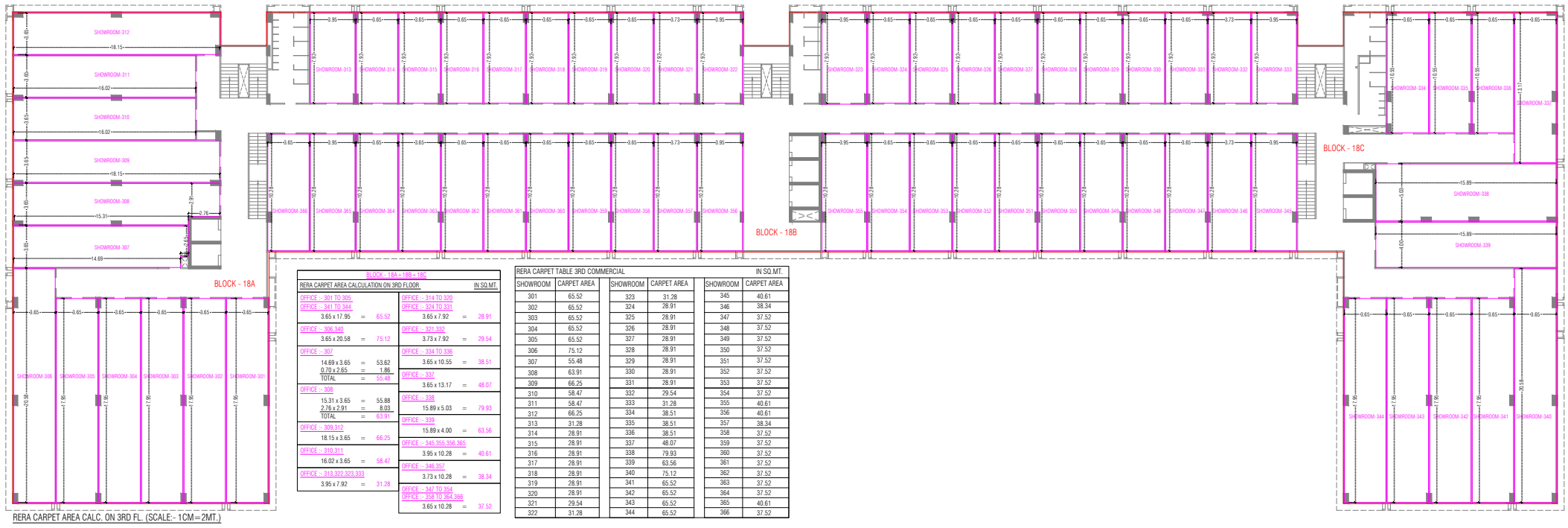
BLOCK - 18A + 18B + 18C

RERA CARPET AREA CALCULATION ON 2ND FLOOR		IN SQ.MT.	
SHOWROOM - 201, 202, 203, 204, 205	SHOWROOM - 214, 214		
SHOWROOM - 242, 243, 244, 245	SHOWROOM - 223 & 224		
3.65 x 17.95 = 65.52	3.95 x 18.30 = 72.28		
SHOWROOM - 206, 241	SHOWROOM - 215 TO 221		
3.65 x 20.58 = 75.12	SHOWROOM - 225 TO 230		
SHOWROOM - 207	SHOWROOM - 222, 228		
14.69 x 3.65 = 53.62	SHOWROOM - 229 TO 237		
0.70 x 2.65 = 1.86	SHOWROOM - 238		
TOTAL = 15.48	SHOWROOM - 239 TO 237		
SHOWROOM - 208	SHOWROOM - 238		
15.31 x 3.65 = 55.88	SHOWROOM - 239		
2.76 x 2.91 = 8.03	SHOWROOM - 240		
TOTAL = 63.91	SHOWROOM - 241		
SHOWROOM - 209, 212	SHOWROOM - 239		
18.15 x 3.65 = 66.25	15.89 x 5.03 = 79.93		
SHOWROOM - 210, 211	SHOWROOM - 240		
16.02 x 3.65 = 58.47	15.89 x 4.00 = 63.56		
SHOWROOM - 213			
3.65 x 8.23 = 30.04			

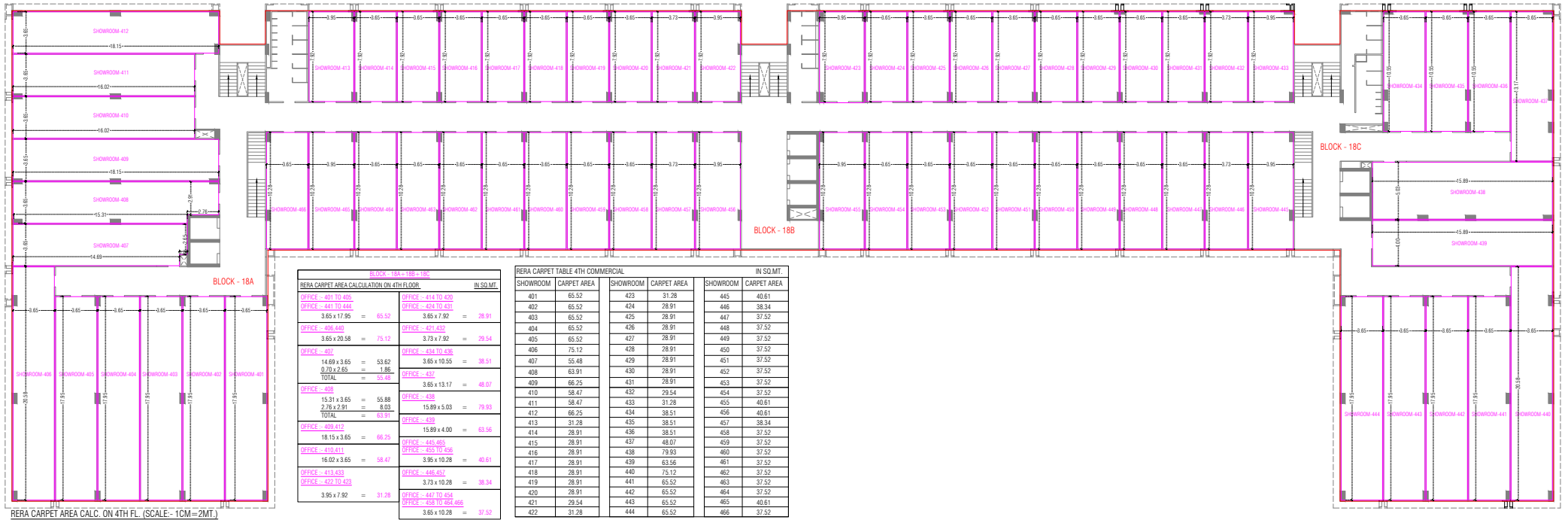
RERA CARPET TABLE 2ND COMMERCIAL

SHOWROOM		CARPET AREA		IN SQ.MT.	
201	65.52	224	72.28		
202	65.52	225	66.79		
203	65.52	226	66.79		
204	65.52	227	66.79		
205	65.52	228	66.79		
206	75.12	229	66.79		
207	55.48	230	66.79		
208	63.91	231	66.79		
209	66.25	232	66.79		
210	58.47	233	68.26		
211	58.47	234	72.28		
212	66.25	235	38.51		
213	30.04	236	38.51		
214	72.28	237	38.51		
215	66.79	238	48.07		
216	66.79	239	79.93		
217	66.79	240	63.56		
218	66.79	241	75.12		
219	66.79	242	65.52		
220	66.79	243	65.52		
221	66.79	244	65.52		
222	68.26	245	65.52		
223	72.28				

SECOND FLOOR RERA LAYOUT



THIRD FLOOR RERA LAYOUT



PROPOSED SPECIFICATION FOR "INSPIRE ARCADE" AT BAPUNAGAR						
AREA	FLOOR	WALL	CEILING	DOORS	WINDOWS/GLAZING	OTHERS
CORRIDOR	GRANITE + VITRIFIED TILES	PAINT + PLASTER	GYPSUM FALSE CEILING		AS PER FAÇADE	
TERRACE	CHINA MOSAI	PAINT + PLASTER		WOODEN/WPC FLUSH DOOR WITH LAMINATE ON BOTH SIDE		
BASEMENT	TRIMIX FLOORING	PAINT + PLASTER	UNFINISHED	ALUMINIUM CLEAR + FIXED DOORS		
SHOPS	VITRIFIED TILES	INTERNAL WALLS PUTTY FINISHED/GYPSUM PLASTER	UNFINISHED	GLASS DOOR	ALUMINIUM WINDOWS	SIGNAGE WITH LIGHT POINT
LIFT LOBBY	GRANITE + VITRIFIED TILES	PAINT + PLASTER	GYPSUM FALSE CEILING		ALUMINIUM WINDOWS	
BATHROOMS	VITRIFIED TILES	VITRIFIED TILES	GYPSUM TILE GRID CEILING	WOODEN/WPC FLUSH DOOR WITH LAMINATE ON BOTH SIDE	ALUMINIUM WINDOWS + EXHAUST	READYMADE PARTITIONS. BATHROOMS FITTED WITH MIRROR AND CP+SANITARY
ELECTRICAL	ADEQUATE LIGHT POINTS IN SHOPS WITH A.C DRAINAGE PROVISION MODULAR SWITCHES 3 PHASE CONNECTION, D.G BACKUP FOR COMMON AREAS AND ONE LIFT IN EACH TOWER.					
AMENITIES	ADEQUATE PARKING, CENTRAL LAWN, ELEVATORS, WATER SUPPLY AND DRAINAGE					
SECURITY	PERIMETER SECURITY, CCTV IN BASEMENT LOBBY					
OTHERS						



A NAME THAT EVOKES TRUST

Adani Realty is the real estate arm of one of India's leading infrastructure & development brands – Adani Group. With a commitment to 'Nation Building' and constructing the 'Address of Goodness', Adani Realty is developing real estate projects in India's most promising destinations, integrating the most refined design aesthetics with cutting-edge real estate development technology.

#AddressOfGoodness®
Ahmedabad | Gurugram | Mumbai | Pune



14+
Years Young



31+
Mn. Sq. Ft.
Area Developed



108+
Mn. Sq. Ft.
Area Under Development



50+
Awards Won



10000+
Happy Families

Residential | Commercial | Retail | Social Club





PROJECT DEVELOPED BY ADANI INFRASTRUCTURE AND DEVELOPERS PVT. LTD.

www.adanirealty.co



India Colony Rd, Bapunagar, Ahmedabad, Gujarat 380024

DISCLAIMER: "This is not an advertisement within the meaning of RERA. This is not an offer, an invitation to offer and/or commitment of any nature. The images include artistic impressions and are for representation purpose only. This information is presented as indicative general information and no warranty is expressly or impliedly given that the completed development will comply in any degree with such artist's impression or represented images as depicted. All content relating to this project are provided solely for the purpose of information and reference. The brochure is subject to change in case of revised plan and RERA project alteration. We reserve the right to provide certain insertions of detailed layout plan pertaining to the specific unit/building/wing to the recipient. The sale is subject to terms of application form and Agreement.